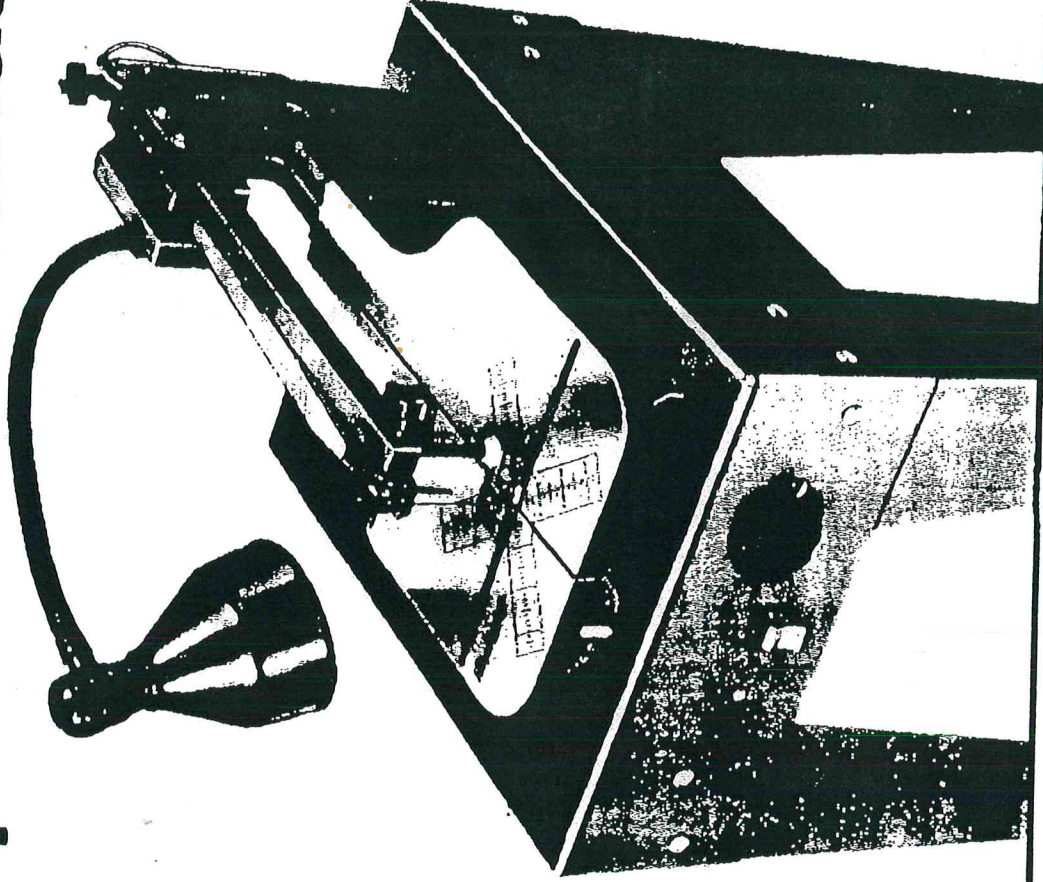


# *Woodmaster*

**TOOLS, INC.**

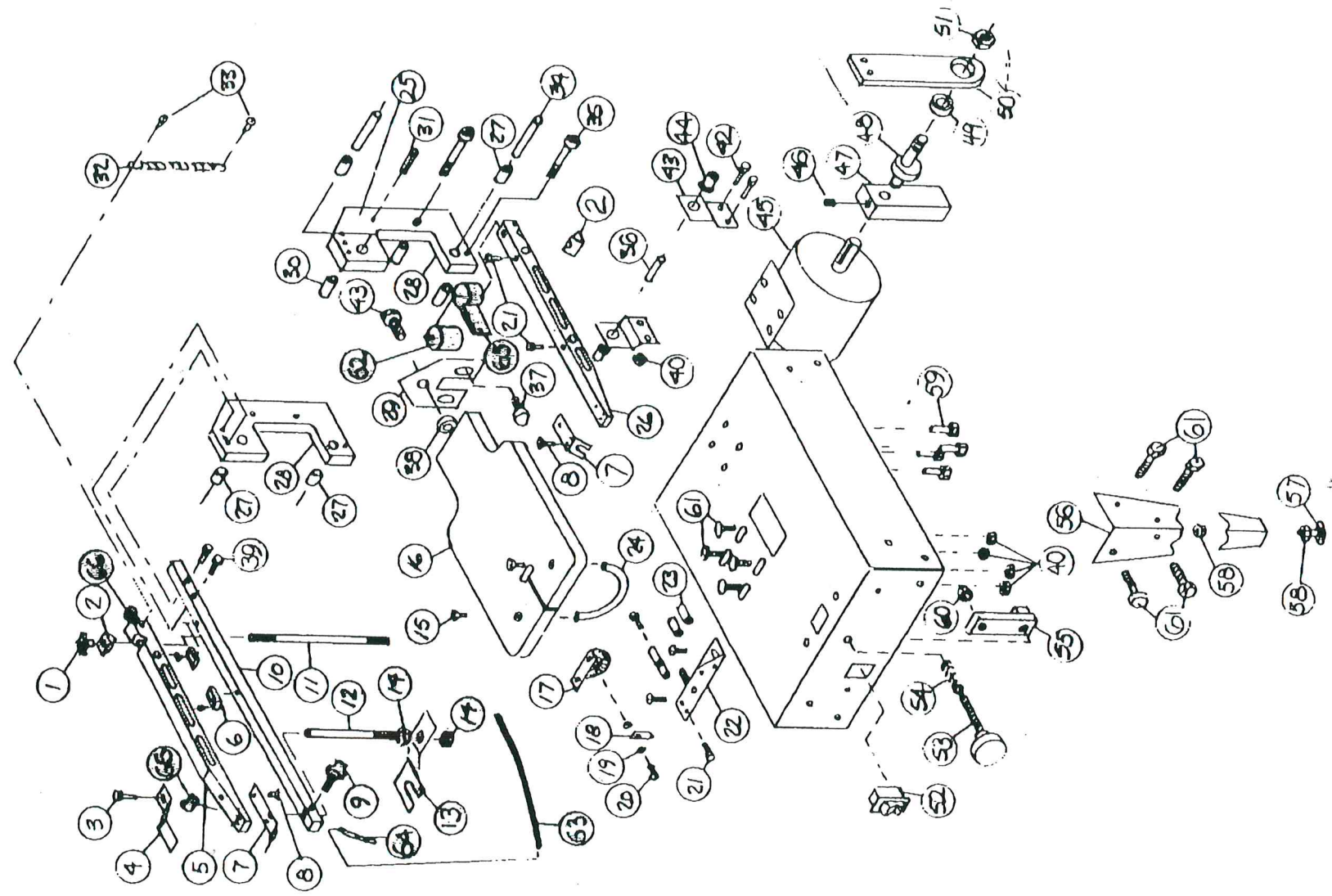
## **MODEL 1800**

# **Precision Scroll Saw Operator's Manual**



**READ THOROUGHLY BEFORE  
OPERATING**





Key No.	Part No.	Description	Qty	Key No.	Part No.	Description	Qty
1	G-561	Tension Adjustment Knob	1	42	Z-574	1/4"-20 x 1" Hex Head Bolt	2
2	G-047	Tension V-Block	2	43	G-600	1/4"-20 x 5/8" Pivot Bolt	1
3	Z-587	10-32 x 1/4" Socket Head Screw	1	44	G-548	Drive Flange Bushing	2
4	G-035	Blade Holder Safety Guard	1	45	L2S25	1/4 HP 2 Speed Motor	1
5	G-029	Upper Arm	1	46	Z-594	5/15-24 x 5/16" Setscrew	1
6	G-520	Blade Installation Bracket	2	47	G-032	Counterbalance	1
7	G-034	Blade Holder Pivot	2	48	G-033	Eccentric Drive Shaft	1
8	Z-578	10-32 x 3/8" Flat Head Socket Screw	4	49	Z-565	Ball Bearing	1
9	G-534	Hold-Down Locking Bolt	1	50	G-022	Drive Arm	1
10	G-008	Hold-Down Extension Arm	1	51	Z-566	1/2"-13 Hex Nut	1
11	Z-559	1/4"-20 x 7" Carriage Bolt	1	52	G-531	Switch	1
12	G-043	Hold-Down Leg	1	53	G-517	Table Locking Knob	1
13	G-044	Hold-Down Foot	1	54	Z-549	Spring	1
14	Z-579	5/16"-18 Hex Nut	2	55	G-014	Table Locking Lever	1
15	Z-558	1/4"-20 x 3/4" Flat Head Socket Screw	2	56	G-026	Leg	4
16	G-025	Table	2	57	Z-550	Leveling Foot	4
17	G-018	Protractor	1	58	Z-551	3/8"-16 Hex Nut	8
18	G-019	Pointer	1	59	Z-291	1/4"-20 x 3/4" Hex Head Bolt	4
19	Z-208	Washer	2	60	Z-573	5/16"-18 Nylon Locking Nut	1
20	Z-557	10-32 x 5/8" Nylon Screw	1	61	Z-535	1/4"-20 x 3/4" Carriage Bolt	22
21	Z-217	10-32 x 3/8" Socket Head Screw	8	62	G-038	Blower	1
22	G-003	Table Tilt Locking Bracket	1	63	Z-041	Hose	1
23	G-010	Table Tilt Pivot-Spacer	4	64	Z-055	Adjustable Nozzle	1
24	G-013	Table Tilt Support Rod	1	65	Z-591	Blower Clamp	1
25	G-005	LH Side Frame	1	66	Z-583	Hose Clamp	3
26	G-030	Lower Arm	1	67	Z-584	8-32 x 3/8" Buttonhead Cap Screw	3
27	G-538	Nylon Flanged Bushing	4				
28	G-006	RH Side Frame	1				
29	G-016	Rear Table Mounting Bracket	1				
30	G-046	Side Frame Spacer	3				
31	G-556	Roll Pin	1				
32	G-028	Spring	1				
33	Z-587	10-32 x 1/4" Round Head Machine Screw	2				
34	G-015	Pivot Pin	2				
35	Z-507	1/4"-20 x 3/4" Socket Head Screw	6				
36	G-021	Driver Pin	1				
37	Z-173	1/4"-20 x 1/2" Flat Head Socket Screw	2				
38	G-048	Spacer	1				
39	Z-582	1/4"-20 x 1-1/4" Hex Head Bolt	2				
40	Z-536	1/4"-20 Self-Locking Nut	24				
41	G-049	Drive Linkage	2				